
REVOLUTIONARY WASHING SOLUTION

By Wellos Korea



Features



Ideal Washing Solution.

- 1. Wellos Ideal Washing Solution is a scientifically designed device with 4 types of natural ceramics and 3,000 Gauss permanent magnets which enable washing without the use of any detergents.**
- 2. Wellos Ideal Washing Solution, is an optimum washing solution that replaces common synthetic detergents.**
- 3. Wellos Ideal Washing Solution provides excellent performance in cleaning, bleaching and sterilizing. It has been approved and certified by KATRI National authorization Institute.**
- 4. Compared with existing laundry methods, Wellos Ideal Washing Solution saves detergent, water, electricity, time, enhances health and benefits the environments.**
- 5. Wellos Ideal Washing Solution is a state of the art design and is made with patented materials which offer outstanding in performance and effectiveness**
- 6. Wellos Ideal Washing Solution is a foamless laundry alternative that neutralizes chlorine in tap water, protects the skin, preserves the color and extends the life of the fabrics. As a bonus, it does not leave residue on clothes.**

Washing Principle



There are 4 technologies combined in the Wellos Ideal Washing Solution.

- 1. Wellos Washing Pellets emit powerful far-infrared rays that break water molecules hydrogen-combinations into small clusters. The small clusters get activated and increase the molecular motions, penetration force, and washing power of the water. The ions generated weaken the surface and inter fabric adhesion causing the dirt to come off easily (action usually accomplished by a surfactant in a detergent).**
- 2. Wellos Alkali Pellets provide the pH level that ordinary chemical detergents do and help remove oily dirt from clothes.**
- 3. Wellos Antibiotic Pellets eliminates the mold, pathogenic organisms in the washing machine and activates the water to increase the cleaning strength.**
- 4. Wellos Chlorine Neutralizing Pellets eliminate the chloride compound in washing water, loosen the surface tension of the water and increases the cleaning strength of the water.**

Washing Principle

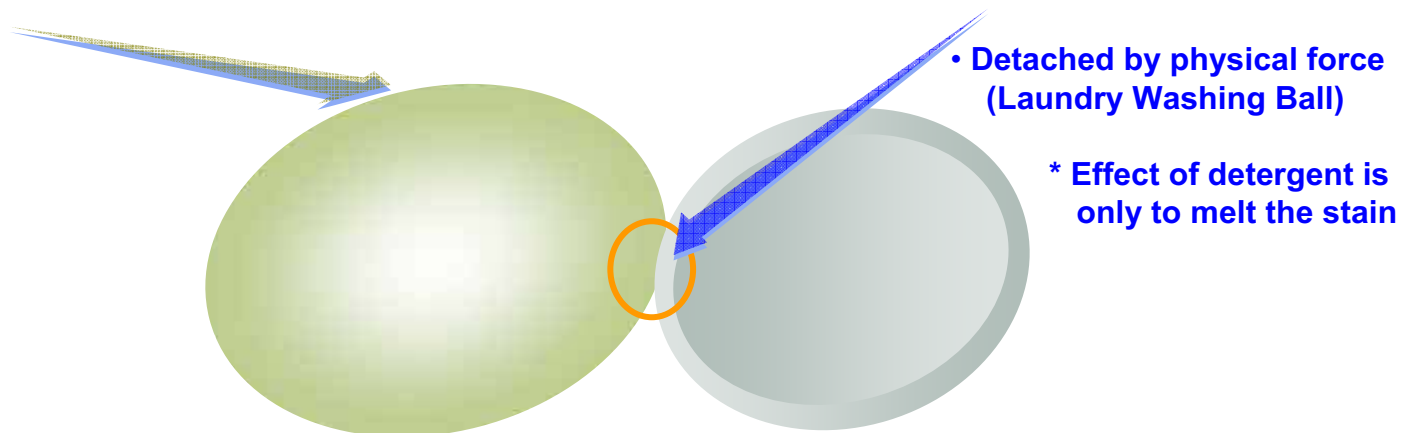


5. **Function of Magnetized Hexagonal Water.**
 - 1) **Removes Scale or Rust.**
 - 2) **Softens Water - The water molecule is transformed into Magnetized water through high pressure magnetic discharge. This process changes hard water into soft water and minimize the size (cluster) of the water molecule.**
 - 3) **Function of Ionization and Magnetization - Passing by the magnets fields, the water changes its chemical and physical characteristics (magnetic — ionic — alkaline) acquiring hexagonal molecular shape (Like the water in the human body) and increased concentration of oxygen (dissolved in the water). Impurities and odor in the washing drum, hoses and water pipes are being discomposed by its strong oxidative effect.**
 - 5) **Sterilization & Antibiotic function. The magnetic field of Magnets and water produces waves that block the proliferation of bacteria and sterilize the water.**
6. **The shape of the Ideal Washing Solution and its projections maximize the surface tension of washing water in order to improve washing power.**

Washing Principle



7. It cuts off detriment of remained detergent and chlorine in tap water entirely. So, it's effective in protecting environment, clothes and human skin.
8. The Noxiousness in a surfactant is substituted by Specially treated permanent Magnets and the Far-Infrared Balls.



Effects



- 1. Prevents skin problem caused by residues of detergent as there is no detergent used for washing.**
- 2. Prevents the oxidation and scămoşare fray fade of fabric caused by chlorine and retains the elasticity of fabric.**
- 3. Eliminates mold through its powerful antibiotic effect pathogenic bacteria which cause unpleasant odors and uncleanness.**
- 4. With these combined functions, it is not necessary to add any bleaching agent, fabric softener and other washing additives.**
- 5. There is no fabric tangle and twist.**
- 6. For people with hypoallergenic, sensitive and delicate skin and newborns, the Ideal Washing Solution is the ideal laundry solution.**
- 7. Economical efficiency, Skin health Protection and reducing the pollution caused by synthetic detergent So, it is like catching three pigeons with one bean.**

Direction



- 1. Laundry loads of minimum 8.5Kg (18.5lb) are needed for a couple of WELLOS WASHING BALLS.**
- 2. To maximize the cleaning effectiveness, leave the WELLOS WASHING BALL in the water for at least 1 hour prior to the laundry cycle. This ensures the water gets fully activated (the water turns soapy at touch). For frequent laundry, putting the WELLOS WASHING BALL into the washing water prior to the washing cycle reduces the time required for washing.**
- 3. It is recommendable to use the Auto Soak Cycle and/or the Heavy Duty Cycle for any load of laundry.**
- 4. For Extremely dirty clothes or in cases that require the use of detergent, 1/5 (20%) of the recommended quantity of detergent is sufficient.**
- 5. It is recommended to wash white clothes separately from colored clothes.**
- 6. After laundry, the WELLOS WASHING BALLS need to dry.**
- 7. Sun drying biweekly on a regular basis insures top long lasting performance.**
- 8. Rinse WELLOS WASHING BALL under flowing water to remove lint.**

Components



- * **Surface Material**

Adflex casing

- * **Powerful Magnetic Field**

Active Water cluster

- * **Wellos Active Components**

Wellos Ceramic - Activated water with Powerful far-infrared rays and positive ions

Antibiotic Ceramic - Strong antibiosis and sterilization function

Alkali Ceramic - Alkalinizes water making it suitable for washing

Chlorine Exclusion Ceramic - Neutralizes the chlorine in tap water



Product Line Up



Wellos Wash Ball

1. **100% natural components**
2. **80% less detergent**
3. **Antibiotic**
4. **Chlorine neutralizer**
5. **Eliminates use of conditioner**
6. **Free of heavy metal**
7. **Environmentally friendly**
8. **Save money**



Test

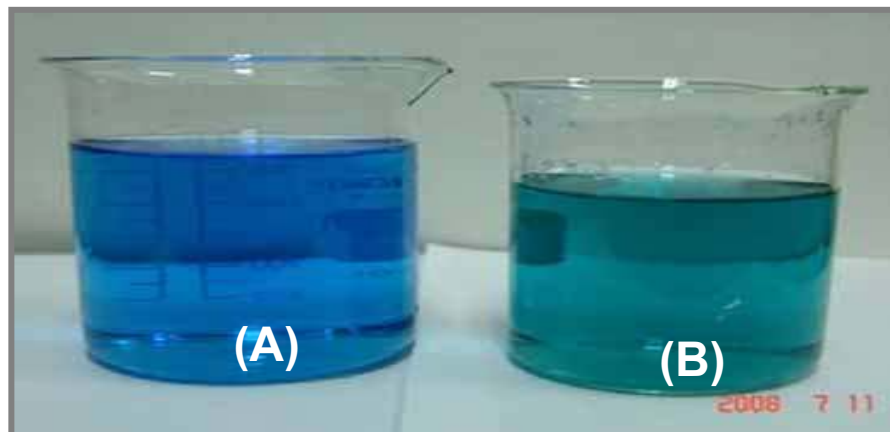


1. pH Level

Purpose	Comparison of pH level between tap water (B) and activated water (A).
Method	Method : Adding small amounts of 0.1% of Bromothymol Blue solution used for measuring the pH level.
Result	(B) Tap water turned green – indicating the pH < 7. (A) Activated water turned blue – indicating the pH < 9 (the same color and level of tap water mixed with laundry detergent).

* Activated water *

When tap water is kept with Wellos Ideal Washing Solution in the washing machine the water changes its characteristic becoming active. For test purposes, the Wellos Ideal Washing Solution into tap water for 1 hour.



Test

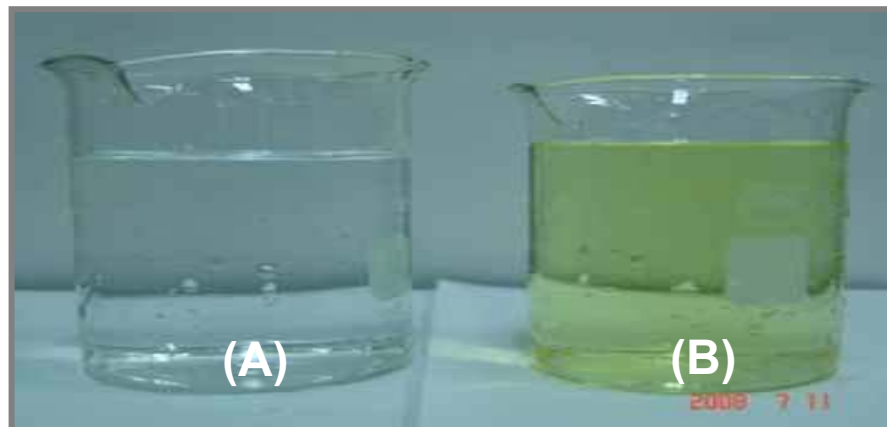


2. Neutralization of chlorine

Purpose	Comparison of tap water containing chlorine (B) and activated water (A).
Method	Adding small amounts of O-Tolindine solution used for measuring residual chlorine. The O-Tolindine solution reacts against the chlorine in tap water. The changes of water color indicates the level of remaining chlorine.
Result	(A) No change in activated water. (B) Chlorine in the tap water reacts against O-Tolindine solution turning it yellows.

* Activated water *

When tap water is kept with Wellos Ideal Washing Solution in the washing machine the water changes its characteristic becoming active. For test purposes, the Wellos Ideal Washing Solution into tap water for 1 hour.



Test

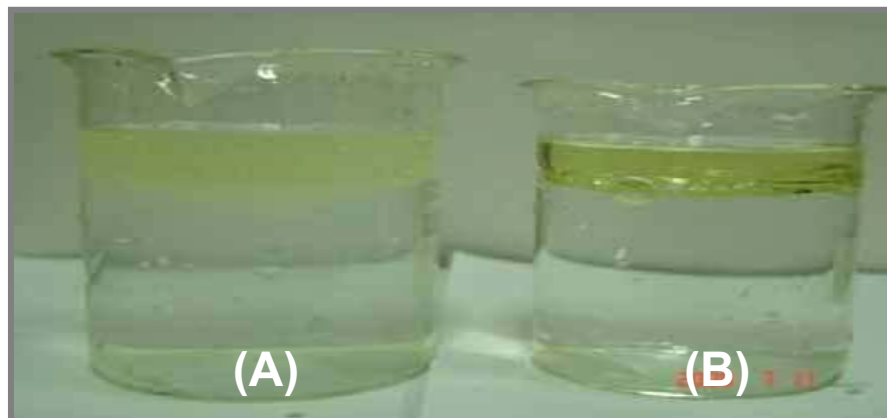


3. Reaction between water and oil

Purpose	Observation of dissolvability (emulsifying) efficiency against oil.
Method	(A) Activated water with Wellos Ideal Washing Solution + cooking oil. (B) Tap water + cooking oil.
Result	(A) Synthetic detergent is almost entirely dissolved in activated water. (B) A large amount of synthetic detergent remains as sediment in the tap water.

* Activated water *

When tap water is kept with Wellos Ideal Washing Solution in the washing machine the water changes its characteristic becoming active. For test purposes, the Wellos Ideal Washing Solution into tap water for 1 hour.



Test

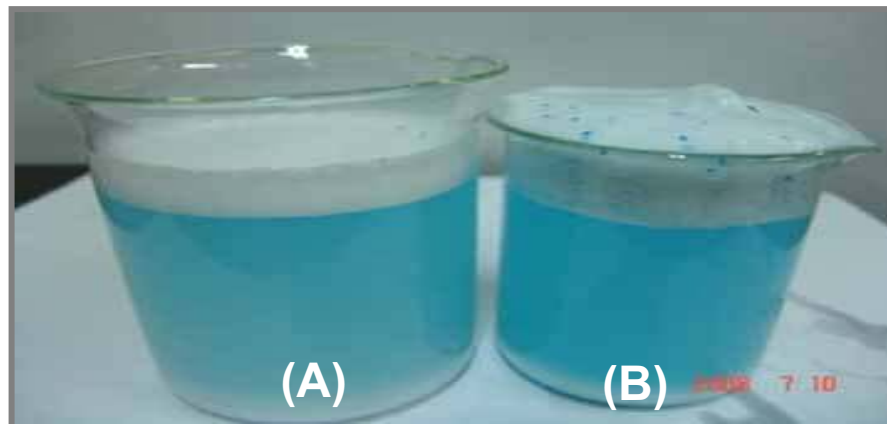


4. Reaction with synthetic detergents

Purpose	Analysis of dissolution efficiency with synthetic detergents.
Method	(A) Activated water with Wellos Ideal Washing Solution + synthetic detergents (B) Tap water + synthetic detergents.
Result	(A) Synthetic detergent is almost entirely dissolved in activated water. (B) A large amount of synthetic detergent remains as sediment in the tap water.

* Activated water *

When tap water is kept with Wellos Ideal Washing Solution in the washing machine the water changes its characteristic becoming active. For test purposes, the Wellos Ideal Washing Solution into tap water for 1 hour.



Test



5. Self (surface) interfacial tension

Purpose	Observation of the function of interfacial tension.
Method	Immersing fabrics of the same size and material into coffee or ink. The fabrics are left to dry after immersion.
Result	(A) The stains on the fabric are removed and change the color of the water. (B) The stain is still present on the fabric and there is little change in the color of the water.

* Activated water *

When tap water is kept with Wellos Ideal Washing Solution in the washing machine the water changes its characteristic becoming active. For test purposes, the Wellos Ideal Washing Solution into tap water for 1 hour.

